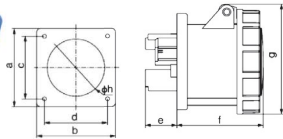




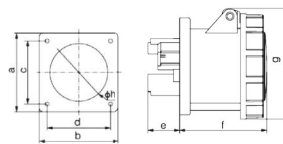
current: 63A | 125A
voltage: 230V~2P+E
IP67 watertight



MODEL		HTN4331	HTN4431
earth contact position		6h	
rated current (A)		63	125
pole		3	
dimension (mm)	a	100	120
	b	100	120
	c	80	100
	d	80	100
	e	39	58
	f	94.5	105.5
	g	114.5	129
	h	73	87
cable nominal cross- section area (mm ²)		6~25	25~70
Price		1,090.-	2,970.-



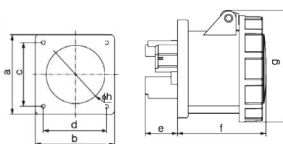
current: 63A | 125A
voltage: 400V~3P+E
IP67 watertight



MODEL		HTN4341	HTN4441
earth contact position		6h	
rated current (A)		63	125
pole		4	
dimension (mm)	a	100	120
	b	100	120
	c	80	100
	d	80	100
	e	39	58
	f	94.5	105.5
	g	114.5	129
	h	73	87
cable nominal cross- section area (mm ²)		6~25	25~70
Price		1,130.-	3,080.-



current: 63A | 125A
voltage: 400V~3P+N+E
IP67 watertight



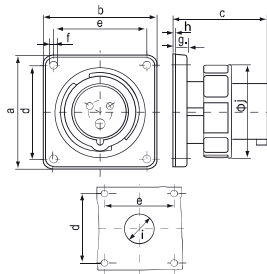
MODEL		HTN4351	HTN4451
earth contact position		6h	
rated current (A)		63	125
pole		5	
dimension (mm)	a	100	120
	b	100	120
	c	80	100
	d	80	100
	e	39	58
	f	94.5	105.5
	g	114.5	129
	h	73	87
cable nominal cross- section area (mm ²)		6~25	25~70
Price		1,320.-	3,300.-

FLANGED INLETS IP67

ปลั๊กฝังกันน้ำ



current: 16A | 32A
voltage: 230V~2P+E
IP67 watertight

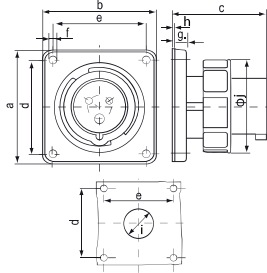


MODEL		DKN6131	DKN6231
earth contact position		6h	
rated current (A)		16	32
pole		3	
dimension (mm)	a	85.7	85.7
	b	85.7	85.7
	c	72	90
	d	69.5	69.5
	e	69.5	69.5
	f	5.5	5.5
	g	11	11
	h	2	2
	i	50	50
	j	71	94
	cable nominal cross- section area (mm ²)		1.5~4
Price		440.-	565.-

* ราคาข้างต้นอาจเปลี่ยนแปลงได้โดยไม่ต้องแจ้งให้ทราบล่วงหน้า
Prices are subjected to change without prior notice



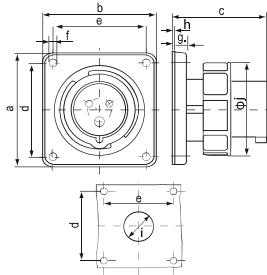
current: 16A | 32A
voltage: 400V-3P+E
IP67 watertight



MODEL		DKN6141	DKN6241
earth contact position		6h	
rated current (A)		16	32
pole		4	
dimension (mm)	a	85.7	85.7
	b	85.7	85.7
	c	72	90
	d	69.5	69.5
	e	69.5	69.5
	f	5.5	5.5
	g	11	11
	h	2	2
	i	50	50
	j	79	94
cable nominal cross- section area (mm ²)		1.5-4	2.5-10
Price		480.-	590.-



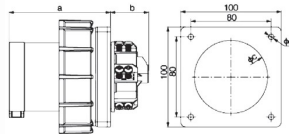
current: 16A | 32A
voltage: 400V-3P+N+E
IP67 watertight



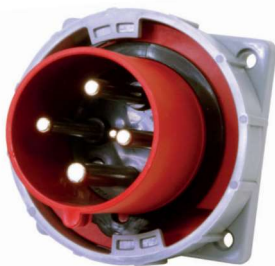
MODEL		DKN6151	DKN6251
earth contact position		6h	
rated current (A)		16	32
pole		5	
dimension (mm)	a	85.7	85.7
	b	85.7	85.7
	c	72	90
	d	69.5	69.5
	e	69.5	69.5
	f	5.5	5.5
	g	11	11
	h	2	2
	i	50	50
	j	89	102
cable nominal cross- section area (mm ²)		1.5-4	2.5-10
Price		540.-	625.-



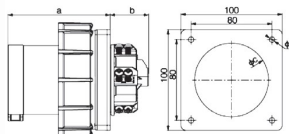
current: 63A | 125A
voltage: 230V-2P+E
IP67 watertight



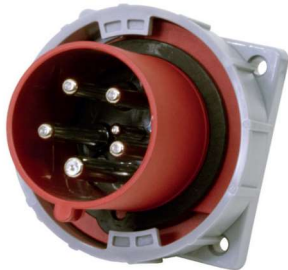
MODEL		HTN6331	HTN6431
earth contact position		6h	
rated current (A)		63	125
pole		3	
dimension (mm)	a	101	131
	b	38	57.5
	c	73	73
	d	5.5	5.5
cable nominal cross- section area (mm ²)		6-25	25-70
Price		1,200.-	Call



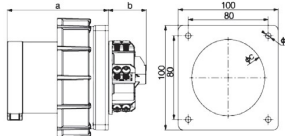
current: 63A | 125A
voltage: 400V-3P+E
IP67 watertight



MODEL		HTN6341	HTN6441
earth contact position		6h	
rated current (A)		63	125
pole		4	
dimension (mm)	a	101	131
	b	38	57.5
	c	73	73
	d	5.5	5.5
cable nominal cross- section area (mm ²)		6-25	25-70
Price		1,265.-	Call



current: 63A | 125A
voltage: 400V~3P+N+E
IP67 watertight



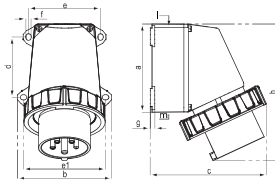
MODEL		HTN6351	HTN6451
earth contact position		6h	
rated current (A)		63	125
pole		5	
dimension (mm)	a	101	131
	b	38	57.5
	c	73	73
	d	5.5	5.5
cable nominal cross- section area (mm ²)		6~25	25~70
Price		1,430.-	3,410.-

WATERPROOF WALL INLET

ปลั๊กตัวผู้ติดลอยกั้นน้ำ



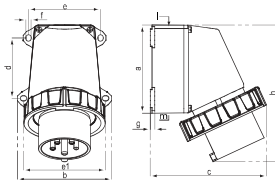
current: 16A | 32A
voltage: 230V~2P+E
IP67 watertight



MODEL		DKN5131	DKN5231
earth contact position		6h	
rated current (A)		16	32
pole		3	
dimension (mm)	a	95	120
	b	102	112
	c	118	145
	d	64.2	90.2
	e	77.5	79
	e1	88	98.5
	f	5.5	5.5
	g	5	5
	h	144	189
	l	25	32
	m	M25	M32
cable nominal cross- section area (mm ²)		1.5-4	2.5-10
Price		500.-	580.-



current: 16A | 32A
voltage: 400V~3P+E
IP67 watertight



MODEL		DKN5141	DKN5241
earth contact position		6h	
rated current (A)		16	32
pole		4	
dimension (mm)	a	95	120
	b	102	112
	c	118	145
	d	64.2	90.2
	e	77.5	79
	e1	88	98.5
	f	5.5	5.5
	g	5	5
	h	144	189
	l	25	32
	m	M25	M32
cable nominal cross- section area (mm ²)		1.5-4	2.5-10
Price		540.-	650.-

* ราคาข้างต้นอาจเปลี่ยนแปลงได้โดยไม่ต้องแจ้งให้ทราบล่วงหน้า
Prices are subjected to change without prior notice